

COUNTY STATISTICS

SNOHOMISH COUNTY, WA

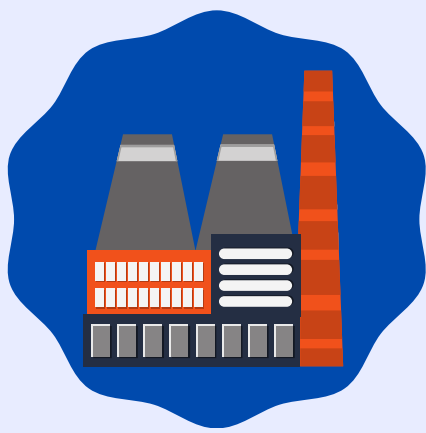
POPULATION – 814,901

POVERTY RATE – 8.81%

**MEDIAN HOUSEHOLD INCOME –
\$87,440**

NUMBER OF EMPLOYEES – 424,295

**MEDIAN PROPERTY VALUE –
\$455,000**



THE LARGEST INDUSTRIES

Manufacturing – 60,517 people

Health Care & Social Assistance – 53,552 people

Retail Trade – 50,039 people

THE HIGHEST PAYING INDUSTRIES

Management of Companies & Enterprises – \$170,381

Utilities – \$95,172

Mining, Quarrying, & Oil & Gas Extraction – \$80,089



THE MOST COMMON JOB GROUPS, BY NUMBER OF PEOPLE LIVING IN SNOHOMISH COUNTY

Management Occupations – 46,366 people

Office & Administrative Support

Occupations – 45,365 people

Sales & Related Occupations – 42,123 people



MOST SPECIALIZED JOBS

Architecture & Engineering Occupations
(1.84 times higher than expected)

Computer & Mathematical Occupations
(1.58 times)

Installation, Maintenance, & Repair
Occupations (1.47 times)



THE MOST COMMON EMPLOYMENT SECTORS

Manufacturing – 60,517 people

Health Care & Social Assistance – 53,552 people

Retail Trade – 50,039 people